

Information Links

News and Information from the Evans Library
Florida Institute of Technology

February 2002

DEADLINE - GRADUATE RESEARCH WORKSHOP - TUESDAY, FEBRUARY 5

The registration deadline for the Spring 2002 graduate research workshops is Tuesday, February 5. Scheduled for Friday, February 8, and Saturday, February 9, these three-module morning sessions will take place in the Library's Link Multimedia Room. Additional information and a registration form may be found on the LINK (www.lib.fit.edu) or at the Service Desk. Geared especially toward the needs of graduate students doing literature research for their theses and dissertations, each of these two identical workshops will begin at 9:00 a.m. and will involve three distinct one-hour modules - 1) search strategies, 2) LINK resources and services, and 3) subject-specific break-out sessions. For more information or registration, graduate students who are interested may contact Joanne Savage, Instructional Programs Technician, at jsavage@fit.edu or at x7656. Reservations are required.

INTERLIBRARY LOAN SERVICE TAKES CFLC AWARD

The Evans Library Interlibrary Loan (ILL) service staff was honored for the second year in a row as an "ILL All-Star" by the Central Florida Library Cooperative (CFLC). The Library was the top private-university lender of library materials to central Florida libraries in 2001, with over 3,000 items provided to the network's resource-sharing partners. This is due largely to the hard work and dedication of Tori Smith and Arlene Ferguson.

ILL service helps to make Florida Tech information resources available to library users all over Florida, the U.S., and the world, as well as facilitating access for all Florida Tech faculty, staff, researchers, and students. For more information, please contact Tori Smith at x7539 or at tosmith@fit.edu.

SPRING 2002 LIBRARY HOURS

Evans Library hours are:

Monday through Thursday
8:00 a.m. - midnight
Friday: 8:00 a.m. - 5:00 p.m.
Saturday: 9:00 a.m. - 5:00 p.m.
Sunday: 10:00 a.m. - midnight

Reference service is available during the following hours:

Monday through Thursday
10:00 a.m. - 9:00 p.m.
Friday: 10:00 a.m. - 5:00 p.m.
Sunday: 2:00 p.m. - 9:00 p.m.

INFORMATION LINKS OPTIONS

A full-color, online pdf version of each month's "Information Links" can be found on the LINK. Paper copies of the current edition can be found in the Library's first-floor hand-out rack. Also available under the LINK's "General Info" is an electronic archive of past newsletters.

LINK FOUNDATION AND EVANS LIBRARY STIPEND RECIPIENTS ANNOUNCED

Eight \$2500 awards have been funded to enhance the Library Information Network (LINK) in areas of interest to the Link Foundation and Evans Library stipends with their academic faculty and library faculty mentors, are:

Luce Bassetti (Oceanography/Ocean Engineering) Mentors: Dr. George Maul/ Ms. Suzanne Jones

Sunij Chacko (Aerospace Engineering) Mentors: Dr. C. Subramanian/ Mr. Tom McFarland

Jon Squadrito (Aviation Management) Mentors: Dr. Donna Wilt/Ms. Jean Sparks

Joseph Sikile (Business/Marine Science) Mentors: Dr. Iver Duedall/Ms. Lois Crozier

Matthew Swinand (Technical Communications) Mentors: Dr. Judith Strother/ Ms. Kathy Turner

Kevin Grelck (Aerospace Engineering) Mentors: Dr. Celine Alvey/Ms. Linda Khan

Taranna Amani Rahman (Aerospace Engineering) Mentors: Dr. Paavo Sepri/ Ms. Wendy Helmstetter

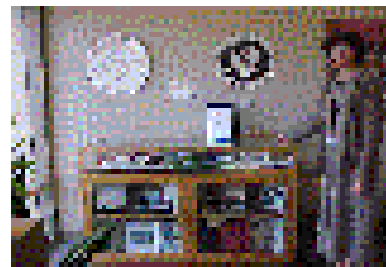
Sarah Wenzel (Computer Information Systems) Mentors: Helayne Ray/ Mr. Rodd Newcombe



L to R Top Row: Bassetti, Sikile, Swinand, Squadrito
Bottom Row: Wenzel, Grelck, Chacko, Rahman

DISPLAYS AND EXHIBITS

"Celebrating Florida Institute of Technology - Then and Now" is the theme of the brand-new display located on the first floor. In conjunction with Homecoming 2002, the Library is featuring a walk down memory lane - from Brevard Engineering College to F.I.T. to Florida Tech. Campus history is relived through photographs, books, artifacts, and other historical university materials.



The third-floor federal depository now features a board display on the "Branches of Government." Documents exemplifying the executive, legislative, and judicial governmental functions are included.

The popular first-floor "Black Writers" display continues, featuring materials by and about influential black authors and orators. This case display features books, government documents, periodical articles, and Internet resources that highlight significant contributions to literature, political perspectives, and history.

Another continuing third-floor display is the Library's collection of IRS tax forms and publications. In addition, clickable from the LINK is easy access to printable versions of all forms and publications.

An ever-changing first-floor exhibit of Brevard Watercolor Society art works also continues. Partial proceeds from art sales benefit the Library's endowment funds.

Evans Library
150 W. University Blvd.
Melbourne, Florida 32901-6975
Phone: 321-674-8086
Fax: 321-724-2559
Email: ktturner@fit.edu